



THC2 Polyclonal Antibody

Catalog No	YP-Ab-15014
Isotype	IgG
Reactivity	Human;Mouse
Applications	WB;IHC;IF;ELISA
Gene Name	MASTL
Protein Name	Serine/threonine-protein kinase greatwall
Immunogen	The antiserum was produced against synthesized peptide derived from human MASTL. AA range:821-870
Specificity	THC2 Polyclonal Antibody detects endogenous levels of THC2 protein.
Formulation	Liquid in PBS containing 50% glycerol, 0.5% BSA and 0.02% sodium azide.
Source	Polyclonal, Rabbit,IgG
Purification	The antibody was affinity-purified from rabbit antiserum by affinity-chromatography using epitope-specific immunogen.
Dilution	WB: 1/500 - 1/2000. IHC: 1/100 - 1/300. ELISA: 1/20000.. IF 1:50-200
Concentration	1 mg/ml
Purity	≥90%
Storage Stability	-20°C/1 year
Synonyms	MASTL; GW; GWL; THC2; Serine/threonine-protein kinase greatwall; GW; GWL; hGWL; Microtubule-associated serine/threonine-protein kinase-like; MAST-L
Observed Band	97kD
Cell Pathway	Cytoplasm, cytoskeleton, microtubule organizing center, centrosome . Nucleus . Cleavage furrow . During interphase is mainly nuclear, upon nuclear envelope breakdown localizes at the cytoplasm and during mitosis at the centrosomes. Upon mitotic exit moves to the cleavage furrow. .
Tissue Specificity	Epithelium,Placenta,
Function	catalytic activity:ATP + a protein = ADP + a phosphoprotein..disease:Defects in MASTL are the cause of thrombocytopenia type 2 (THC2) [MIM:188000]. Thrombocytopenia is defined by a decrease in the number of platelets in circulating blood, resulting in the potential for increased bleeding and decreased ability for clotting..,function:Putative serine/threonine kinase which may be involved in megakaryocyte differentiation..similarity:Belongs to the protein kinase superfamily. AGC Ser/Thr protein kinase family..similarity:Contains 1 AGC-kinase C-terminal domain..similarity:Contains 1 protein kinase domain.,
Background	This gene encodes a microtubule-associated serine/threonine kinase. Mutations at this locus have been associated with autosomal dominant thrombocytopenia, also known as thrombocytopenia-2. Alternatively spliced transcript variants have



been described for this locus. [provided by RefSeq, Feb 2010],

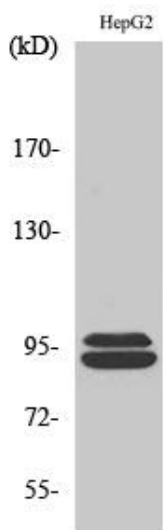
matters needing attention

Avoid repeated freezing and thawing!

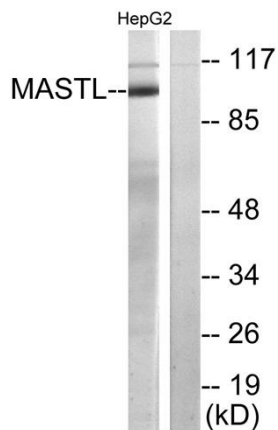
Usage suggestions

This product can be used in immunological reaction related experiments. For more information, please consult technical personnel.

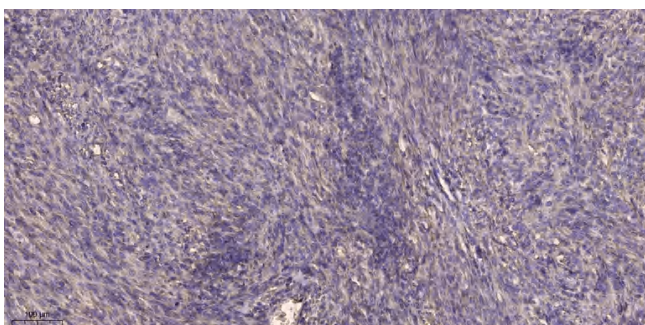
Products Images



Western Blot analysis of various cells using THC2 Polyclonal Antibody



Western blot analysis of lysates from HepG2 cells, using MASTL Antibody. The lane on the right is blocked with the synthesized peptide.



Immunohistochemical analysis of paraffin-embedded human Colon cancer. 1, Antibody was diluted at 1:200(4° overnight). 2, Tris-EDTA,pH9.0 was used for antigen retrieval. 3,Secondary antibody was diluted at 1:200(room temperature, 45min).